

# ARNELL

*everything special for you*

## Collection

2020



**ARNELL**

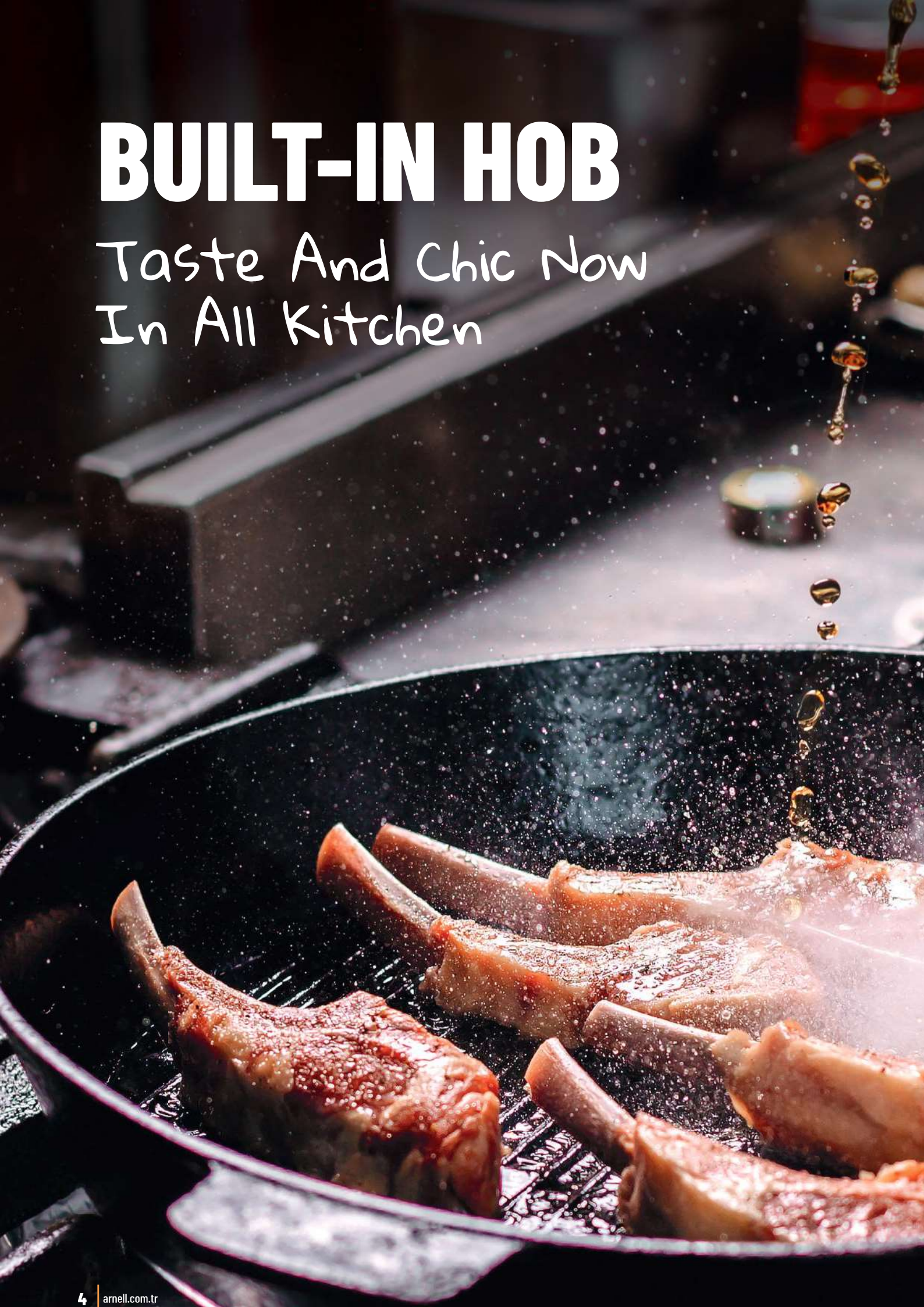
*all size custom*





# BUILT-IN HOB

Taste And Chic Now  
In All Kitchen



## AR-630 | 2 GAS BURNER GLASS

WHITE GLASS, BLACK GLASS



### Optional Features

Gas Safety System  
Triple Burner  
LPG / NG

30 cm Built-in Hob

2 Gas Burner

Automatic Ignition

Easy To Clean And Rustproof Body

Enameled Pan Support

Blue Flame

Aluminum Euro Burner

Enameled Burner Cover

## AR-610 | 4 GAS BURNER GLASS

WHITE GLASS, BLACK GLASS



### Optional Features

Gas Safety System  
Triple Burner  
LPG / NG

60 cm Built-in Hob

4 Gas Burner

Automatic Ignition

Easy To Clean And Rustproof Body

Enameled Pan Support

Blue Flame

Aluminum Euro Burner

Enameled Burner Cover

**AR-600 | 4 GAS BURNER**  
INOX, WHITE, BROWN, BLACK



**Optional Features**

Gas Safety System  
Triple Burner  
LPG / NG

60 cm Built-in Hob

4 Gas Burner

Automatic Ignition

Easy To Clean And Rustproof Body

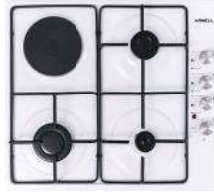
Enameled Pan Support

Blue Flame

Aluminum Euro Burner

Enameled Burner Cover

**AR-601 | 3 GAS + 1 ELECTRIC BURNER**  
INOX, WHITE, BROWN, BLACK



**Optional Features**

Gas Safety System  
Triple Burner  
LPG / NG

60 cm Built-in Hob

3 Gas Burner

1 Electric Hot 1000W

Automatic Ignition

Easy To Clean And Rustproof Body

Enameled Pan Support

Blue Flame

Aluminum Euro Burner

Enameled Burner Cover

## AR-602 | 2 GAS + 2 ELECTRIC BURNER

INOX, WHITE, BROWN, BLACK



### Optional Features

Gas Safety System  
Triple Burner  
LPG / NG

60 cm Built-in Hob

2 Gas Burner

2 Electric Hotplate 1000W&1500W

Automatic Ignition

Easy To Clean And Rustproof Body

Enameled Pan Support

Blue Flame

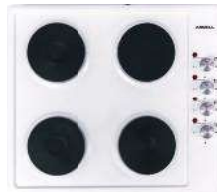
Aluminum Euro Burner

Enameled Burner Cover



## AR-604 | 4 ELECTRIC BURNER

INOX, WHITE, BROWN, BLACK



### Optional Features

Rapid Hotplate  
LPG / NG

60 cm Built-in Hob

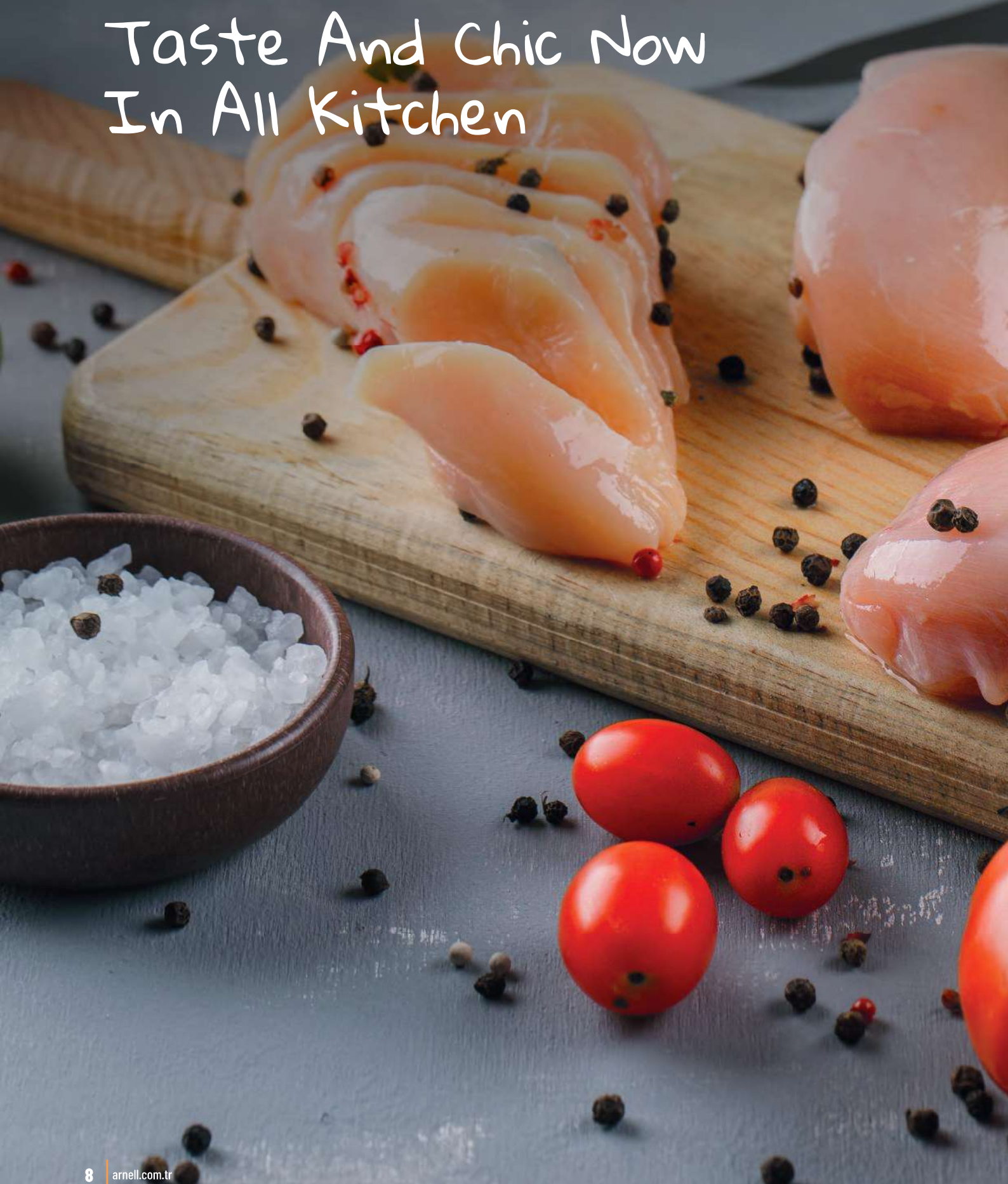
4 Electric Hotplate 1000W

Easy To Clean And Rustproof Body



# CLASSIC COOKER

Taste And Chic Now  
In All Kitchen





**AC-100 | SINGLE GAS BURNER**  
 WHITE, BROWN, BLACK



**Optional Features**

*Bottom Cover  
 Gas Safety System*

- 1 Gas Burner
- Monoblock Enameled Body
- Easy To Clean And Rustproof Body
- Low Gas Consumption
- Blue Flame
- Aluminum Cast Burner
- Enameled Burner Cover

**AC-200 | 2 GAS BURNER**  
 WHITE, BROWN, BLACK



**Optional Features**

*Electrostatic Powder Coated Top Lid  
 Bottom Cover  
 Gas Safety System  
 LPG / NG*

- 2 Gas Burner
- Monoblock Enamel Covered Body
- Easy To Clean And Rustproof Body
- Low Gas Consumption
- Blue Flame
- Aluminum Cast Burner
- Enameled Burner Cover

## AC-201 | 1+1 GAS&ELECTRIC BURNER

WHITE, BROWN, BLACK



### Optional Features

Electrostatic Powder Coated Top Lid  
Gas Safety System  
LPG / NG

1 Gas Burner

1 Electric Hotplate 1000W

Monoblock Enamel Covered Body

Easy To Clean And Rustproof Body

Low Gas Consumption

Blue Flame

Aluminum Cast Burner

Enameled Burner Cover

Bottom Cover



Hotplate

## AC-200 B | 2 GAS BURNER

WHITE, BROWN, BLACK



### Optional Features

Electrostatic Powder Coated Top Lid  
Bottom Cover  
Gas Safety System  
LPG / NG

2 Gas Burner

Big Body

Monoblock Enamel Covered Body

Easy To Clean And Rustproof Body

Low Gas Consumption

Blue Flame

Aluminum Cast Burner

Enameled Burner Cover



2 Gas Burner

**AC-300 | 3 GAS BURNER**  
WHITE, BROWN, BLACK



**Optional Features**

*Electrostatic Powder Coated Top Lid  
Bottom Cover  
Gas Safety System  
LPG / NG*



3 Gas Burner

Monoblock Enamel Covered Body

Easy To Clean And Rustproof Body

Low Gas Consumption

Blue Flame

Aluminum Cast Burner

Enameled Burner Cover

**AC-301 | 2+1 GAS&ELECTRIC BURNER**  
WHITE, BROWN, BLACK



**Optional Features**

*Electrostatic Powder Coated Top Lid  
Gas Safety System  
LPG / NG*

2 Gas Burner

1 Electric Hotplate 1000W

Monoblock Enamel Covered Body

Easy To Clean And Rustproof Body

Low Gas Consumption

Blue Flame

Aluminum Cast Burner

Enameled Burner Cover

Bottom Cover



**AC-400 | 4 GAS BURNER**  
WHITE, BROWN, BLACK



**Optional Features**

*Electrostatic Powder Coated Top Lid  
Bottom Cover  
Gas Safety System  
LPG / NG*



4 Gas Burner

Monoblock Enamel Covered Body

Easy To Clean And Rustproof Body

Low Gas Consumption

Blue Flame

Aluminum Cast Burner

Enameled Burner Cover

**AC-401 | 3+1 GAS&ELECTRIC BURNER**  
WHITE, BROWN, BLACK



**Optional Features**

*Electrostatic Powder Coated Top Lid  
Bottom Cover  
Gas Safety System  
LPG / NG*

3 Gas Burner

1 Electric Hotplate 1000W

Monoblock Enamel Covered Body

Easy To Clean And Rustproof Body

Low Gas Consumption

Blue Flame

Aluminum Cast Burner

Enameled Burner Cover

Bottom Cover



**AC-400 L | 4 GAS BURNER**  
**WHITE, BROWN, BLACK**



4 Gas Burner

**Optional Features**

- Electrostatic Powder Coated Top Lid
- Bottom Cover
- Gas Safety System
- LPG / NG

- 4 Gas Burner
- Button Ignition
- Monoblock Enamel Covered Body
- Easy To Clean And Rustproof Body
- Low Gas Consumption
- Blue Flame
- Aluminum Cast Burner
- Enameled Burner Cover

**AR-865 | SINGLE HOTPLATE**  
**BLACK**



- 1500 Watt Hotplate
- Electrostatic Powder Coated Body
- Thermostat Control
- Ergonomic Design



Thermostat Control European Standards Hotplate

**AR-866 | 2 HOTPLATE**  
**BLACK**



- 1000 Watt and 1500 Watt Hotplates
- Electrostatic Powder Coated Body
- Thermostat Control
- Ergonomic Design



Thermostat Control European Standards Hotplate

# CHURN MACHINES

Make Your Homemade  
Butter



## ARY-05 | 5 LT MINI CHURNER INOX



Small for Home Use

Glass Lid

Stainless Steel Body

Easy to Clean

## ARY-15 | 15 LT CHURN MACHINE INOX



### Optional Features

Color Opportunity on the Bottom Part, Timer, Super Propeller

Transparent Lid

120W Motor Power

Inox Body

Aluminum and Sinter Bronzine Bearing

Easy to Clean

Belt - Pulley System

## ARY-20 | 20 LT CHURN MACHINE INOX



### Optional Features

*Color Opportunity on the Bottom Part, Timer, Super Propeller*

Transparent Lid

120W Motor Power

Inox Body

Aluminum and Sinter Bronzine Bearing

Easy to Clean

Belt - Pulley System

## ARY-30 | 30 LT CHURN MACHINE INOX



### Optional Features

*Color Opportunity on the Bottom Part, Timer, Super Propeller*

Transparent Lid

120W Motor Power

Inox Body

Aluminum and Sinter Bronzine Bearing

Easy to Clean

Belt - Pulley System



## ARY-40 | 40 LT CHURN MACHINE INOX



### Optional Features

*Color Opportunity on the Bottom Part, Timer, Super Propeller*

Transparent Lid

150W Motor Power

Inox Body

Aluminum and Sinter Bronzine Bearing

Easy to Clean

Belt - Pulley System

## ARY-50 | 50 LT CHURN MACHINE INOX



### Optional Features

*Color Opportunity on the Bottom Part, Timer, Super Propeller*

Transparent Lid

150W Motor Power

Inox Body

Aluminum and Sinter Bronzine Bearing

Easy to Clean

Belt - Pulley System

## ARY-60 | 60 LT CHURN MACHINE INOX



### Optional Features

*Color Opportunity on the Bottom Part, Timer, Super Propeller*

Transparent Lid

150W Motor Power

Inox Body

Aluminum and Sinter Bronzine Bearing

Easy to Clean

Belt - Pulley System



# HEATERS

Warm Your Winter

## AR-838 | SINGLE RESISTANCE VERTICAL HEATER BLACK



2000  
Watt

Decorative  
Appearance

Micatronic  
Resistance

Thermostat Control

Thermostat Control

2000 Watt Mikatronic Resistance

Thermostat Control

Aluminum Body

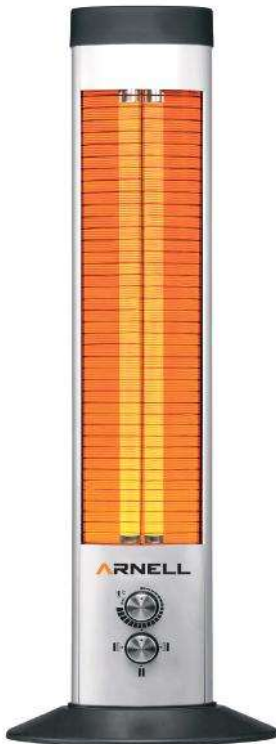
Being Overturned Safety

Decorative Design

Carrying Handle

Cable Wrap

## AR-839 | DOUBLE RESISTANCE VERTICAL HEATER GRAY



2400  
Watt

Decorative  
Appearance

Micatronic  
Resistance

Thermostat Control

Thermostat Control

2\*1200 Watt Mikatronic Resistance

Thermostat Control

Aluminum Body

Being Overturned Safety

Decorative Design

Carrying Handle

Cable Wrap

## AR-840 | HORIZONTAL&VERTICAL HEATER GRAY



2000  
Watt

Decorative  
Appearance

Micatronic  
Resistance

Thermostat Control

Thermostat Control

2000 Watt Mikatronic Resistance

Thermostat Control

Aluminum Body

Being Overturned Safety

Decorative Design

4 Different Uses with one Apparatus

## AR-836 | 3+1 RESISTANCE QUARTZ HEATER GRAY



2700  
Watt

Decorative  
Appearance

3+1  
Resistance

Thermostat Control

Thermostat Control

3 Heating Level

3\*700 Watt Quartz Resistance on Front and 600 Watt Quartz Resistance on Top  
(Total Power 2700 Watt)

Thermostat Control

Being Overturned Safety, Demounted Legs

Shock Heating in 25 sec.

Heat Condensing Feature with Back Panel

Decorative Design

## AR-837 | 3 RESISTANCE QUARTZ HEATER BLACK



2700  
Watt

Decorative  
Appearance

3 Resistance

Thermostat Control

3 Heating Level

3\*900 Watt Quartz Resistance on Front (Total Power 2700 Watt)

Thermostat Control, Being Overturned Safety

Demounted Legs

Shock Heating in 25 sec.

Heat Condensing Feature with Back Panel

Decorative Design

## AR-835 | MINI HEATER BLACK



1000  
Watt

Decorative  
Appearance

Front Heating System

1000 Watt Quartz Resistance

Thermostat Control

Cable Wrap Aparatus

Electrostatic Powder Coated Body

Decorative Design

	MODEL	NET WEIGHT (kg)	GROSS WEIGHT (kg)	WIDTH (cm)	LENGTH (cm)	HEIGHT (cm)	VOLUME
<b>BUILT-IN COOKERS</b>	AR-600 CARTON BOX	6,980	7,645	55,5	60,5	10,5	0,0353
	AR-600 STYROFOAM PACKAGE	6,980	7,370	59,5	64,5	17	0,0652
	AR-601 STYROFOAM PACKAGE	7,540	7,930	59,5	64,5	17	0,0652
	AR-602 STYROFOAM PACKAGE	8,190	8,580	59,5	64,5	17	0,0652
	AR-604 STYROFOAM PACKAGE	8,200	8,590	59,5	64,5	17	0,0652
	AR-610 STYROFOAM PACKAGE	10,750	11,140	59,5	64,5	17	0,0652
	AR-630 STYROFOAM	5,400	5,780	33	57	12,5	0,0235
	AR-630 CARTON BOX	5,400	6,270	37	62,5	14	0,0324
	AR-650 STYROFOAM	7,145	7,535	59,5	64,5	17	0,0652
<b>TABLE TOP COOKERS</b>	AR-650 CARTON BOX	7,145	7,810	55,5	60,5	10,5	0,0353
	AR-660 STYROFOAM PACKAGE	11,085	11,475	59,5	64,5	17	0,0652
	AC-100	1,670	1,945	32	37,5	11,5	0,0138
	AC-100 CLOSED BOTTOM	1,950	2,220	32	37,5	11,5	0,0138
	AC-200	2,310	2,685	33,5	54,5	12	0,0219
	AC-200 CLOSED BOTTOM	2,830	3,200	33,5	54,5	12	0,0219
	AC-200 WITH COVER	2,980	3,360	33,5	54,5	12	0,0219
	AC-200 WITH COVER & CLOSED BOTTOM	3,520	3,810	33,5	54,5	12	0,0219
	AC-300	3,120	3,590	38	67	12	0,0306
	AC-300 CLOSED BOTTOM	3,715	4,185	38	67	12	0,0306
	AC-300 WITH COVER	4,275	4,745	38	67	12	0,0306
	AC-300 WITH COVER & CLOSED BOTTOM	4,870	5,340	38	67	12	0,0306
	AC-400	3,930	4,465	59	52	12	0,0368
	AC-400 CLOSED BOTTOM	4,865	5,400	59	52	12	0,0368
	AC-400 WITH COVER	5,060	5,600	59	52	12	0,0368
	AC-400 WITH COVER & CLOSED BOTTOM	6,000	6,530	59	52	12	0,0368
	AC-401	5,495	6,070	59	52	12	0,0368
	AR-865	1,910	2,120	27,5	29,5	10	0,0081
	AR-866	3,480	3,810	53	29,5	10	0,0156
<b>CHURNERS</b>	ARY-05	1,750	1,815	22,5	22,5	32,5	0,0165
	ARY-20	7,395	8,250	36	36	58	0,0752
	ARY-30	7,135	8,000	41	41	58	0,0975
	ARY-40	8,025	8,940	41	41	68	0,1143
	ARY-50	8,430	9,460	41	41	78	0,1311
	ARY-60	8,775	9,900	41	41	88	0,1479
<b>HEATERS</b>	AR-835	1,250	1,550	15,4	24	52	0,0192
	AR-836	3,520	3,900	13,5	50,4	59,2	0,0403
	AR-837	4,800	5,600	13,5	73,7	59,2	0,0589
	AR-838	2,500	3,150	14,5	22,5	95	0,0310
	AR-839	2,500	3,150	14,5	22,5	95	0,0310
	AR-840	2,350	2,900	14,5	22,5	85	0,0277

**WEIGHT AND DIMENSIONS ARE FOR INFORMATION ONLY. THE COMPANY HAS THE RIGHT TO MAKE CHANGES.**



*Aksa ltd sti. has right to change technical specifications, colors, accessories and design.  
We are not responsible because of faults in typographic and graphic.*

**ARNELL**

**Aksa Ev Eşyaları Dayanıklı Tüketim Malları  
İnşaat San. ve Tic. Ltd. Şti**

Kayseri OSB 2. Cad. No: 11 Melikgazi - Kayseri /Turkey  
T. +90 352 322 30 60 - info@arnell.com.tr

[arnell.com.tr](http://arnell.com.tr)

